



SERIES 7045

MADE IN GERMANY



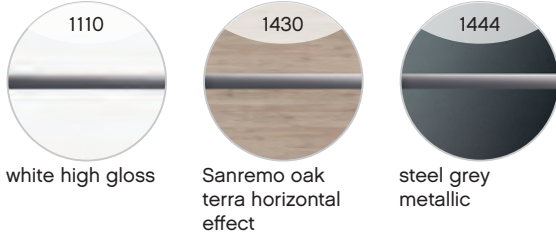


SERIES 7045

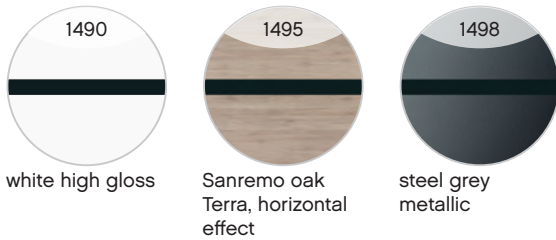
Front panel and carcass available in any combination
Handle: see detailed description

front decors PG 1

MDF with deep-drawn foil
Fronts with chrome-coloured insert (for washbasin vanity units and handle styles Z1)



Fronts with black insert (for washbasin vanity units and handle style V2)



front decors PG 2

MDF with deep-drawn foil and synchronous pore
Fronts with chrome-coloured insert (for washbasin vanity units and handle styles Z1)



Fronts with black insert (for washbasin vanity units and handle style V2)





SERIES 7045

carcass decor



white gloss

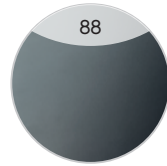


Sanremo oak
terra horizontal
effect

FEEL
nature



Halifax oak
horizontal effect
with synchronous
pore



steel grey

mineral marble washbasins



white gloss

handles



V2 model
Black matte



Z1 model
chrome gloss

Due to differing door shapes/widths, the handle dimensions/lengths are permanently assigned.



SERIES 7045

product photos





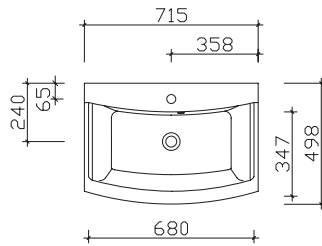
SERIES 7045

Washbasin overview

mineral marble washbasins

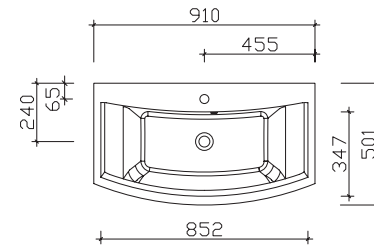
width 715 mm

BME033M71501



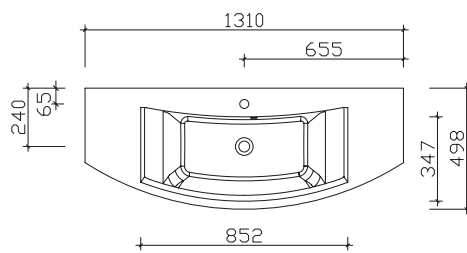
Width 910 mm

BME033M91001



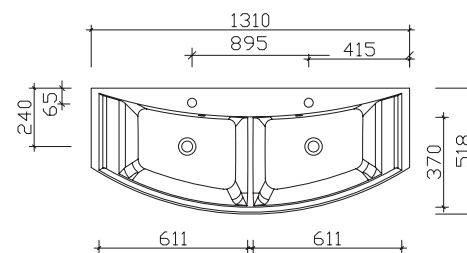
1310 mm

BME033M13101



1310 mm

BMD033M13101





SERIES 7045

mirror cabinet overview

SEEE02193



Mirror cabinet incl. black LED profile (right and left)

	width (mm)
SEEE02173	732
SEEE02193	932
SEEE02113	1332
SDEE02113	1332